

Anthropomorphic Stele, Arabian Peninsula. Fourth millennium B.C.E. Sandstone

Content: In Saudi Arabia, Islam forbade figures of humans or creatures in religious context. Therefore worshipping idols represent few people. A vast majority of the anthropomorphic images were destroyed.

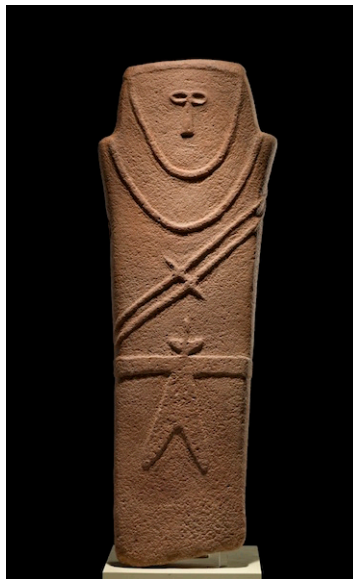
Content: The daggers and other items that adorn the figure may have been distinctive to the religion. At this time, it was still traditional to wear a dagger on your belt. The daggers may symbolize that the figure is a man. In addition to the daggers, the person is clothed (a belted robe) and has two bands across the chest.

Content: Because this piece is from the Neolithic age, we do not know enough about this piece to know its artist.

Content: The figure is not realistic, but it is based off of reality

Function: The piece is carved and is meant to stand upright in order to mark territories and show the importance of a person. The meaning and symbol of a stele varies throughout the region in which it is found.

Form: Though the sculpture is not complex, it clearly represents a human figure.



Form: Both sides of the stele are sculpted, but the emphasis is on the front. The face is shaped like a trapezoid. Many of the features on the stele are geometric shapes. This goes to show that art wasn't advanced in this time period.

Function: It is a stele. A stele is a marker that stands for an important event. This particular stele is said to have been a grave marker, it was most likely used to worship a person.

Context: It is also possible that the figures were given as rewards for heroic actions. Therefore the figure could represent a warrior, all the more reason to believe that they were given out as an honor.

Form: Both sides of the figure are carved; therefore, you can walk around the work and see all parts of it.

Context: This piece shows individuality and originality. Its purpose was to portray the importance of one person against a group of people.

Context: The piece is in a very good condition and this can suggest that it was kept inside, most likely in a tomb.

Works Cited

"Anthropomorphic Stele." *Flashcards*. Quizlet, n.d. Web. 16 Sept. 2016.

<<https://quizlet.com/90000995/anthropomorphic-stele-flash-cards/alphabetical>>.

Dneesio Follow. "Dneesio." *Global Prehistory PPT*. N.p., 07 Aug. 2015. Web. 16 Sept. 2016.

<<https://www.slideshare.net/secret/f91NjOGbiZnTir>>.

Hager, Nathalie N. "Anthropomorphic Stele." *Khan Academy*. N.p., n.d. Web. 16 Sept. 2016.

<<https://www.khanacademy.org/humanities/prehistoric-art/neolithic-art/a/anthropomorphic-stele>>.

Kurt. "Roads of Arabia." *Travel to Eat*. N.p., 13 Dec. 2013. Web. 16 Sept. 2016.

<<https%3A%2F%2Ftraveltoeat.com%2Froads-of-arabia%2F>>.

McCullough, Mary. "Art Global Prehistory." *Harrison Humanities*. N.p., n.d. Web. 16 Sept.

2016. <<http://harrisonhumanities.weebly.com/art-global-prehistory.html>>.